

# Community Meeting



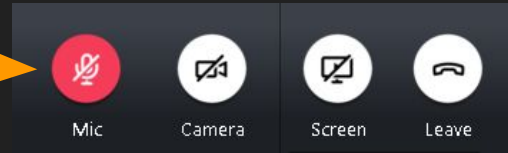
July 7, 2020



Welcome!

A couple housekeeping things before we get started:

1. Please make sure your mic is muted



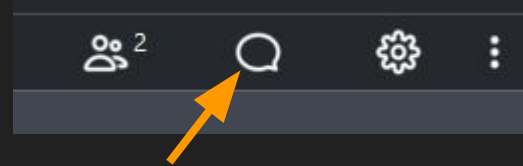
2. Make sure your name is displayed correctly

- a. click the people icon, then click on the down arrow next to yourself and click “edit your name and email”  
-OR-
- b. Click on “File” on the left of the very top bar, and then click “edit your name and email”



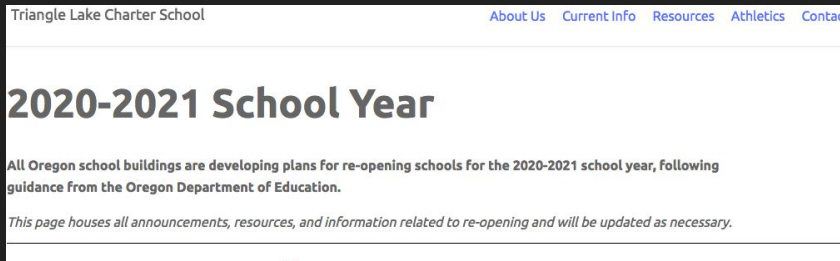
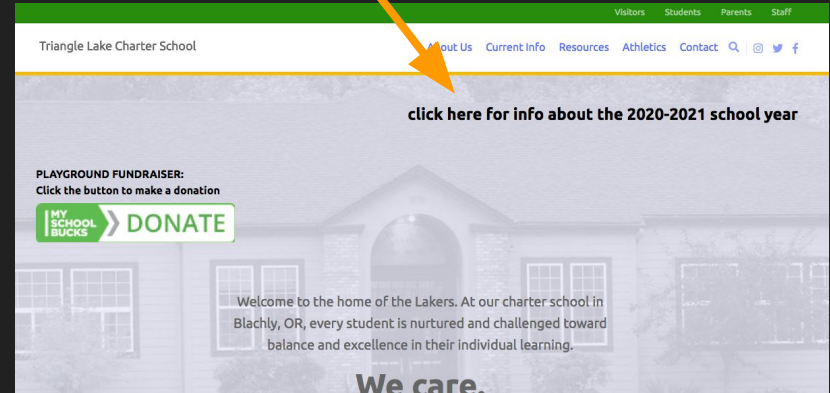
# Welcome!

- Introductions
- We have some information to present, and then will have an opportunity for you to ask questions and provide input at the end.
- You are welcome to put questions in the chat box at any time, and we'll address them when we get to the questions section.
- We are capturing all questions and input shared today.

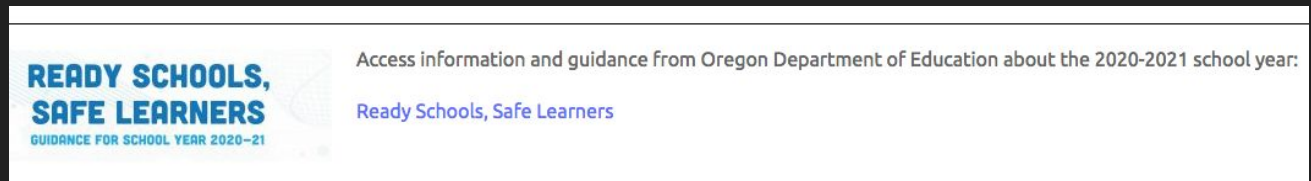


Our website has a link from the homepage...

...which takes you to a page dedicated to information about the 20-21 school year...



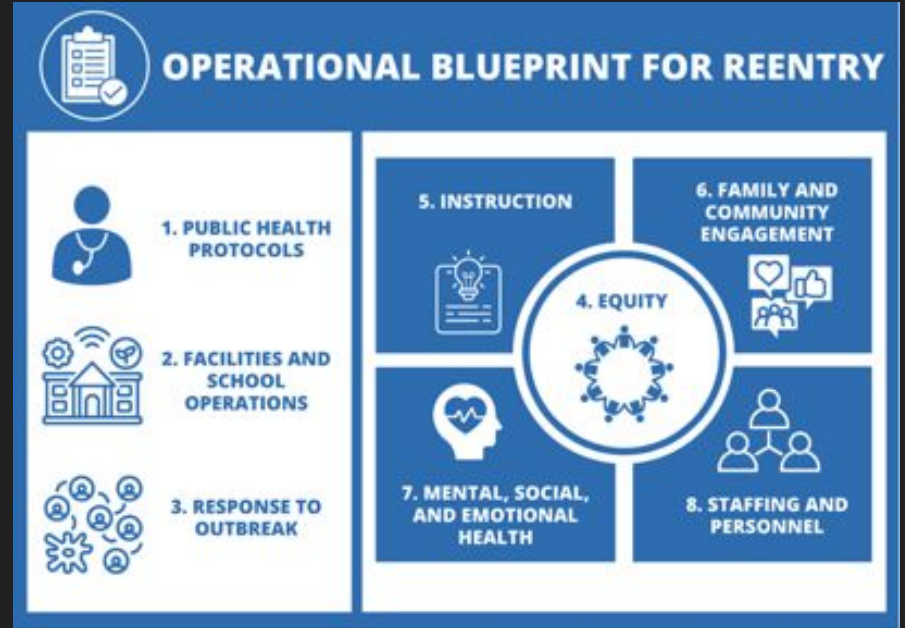
...and, on that page is a link to ODE's page for next school year



# Blueprint

Each school/district will create an Operational Blueprint with specific required actions

- Submitted to LPHA
- Submitted to School Board
- Submitted to ODE
- Posted on website
- By August 15



## Grounding PRINCIPLES for Reducing Potential Exposures

The mainstays of reducing exposure to the coronavirus and other respiratory pathogens are:

1. **Physical distancing** — minimizing close contact (<six feet) with other people.
2. **Hand hygiene** — frequent washing with soap and water or using hand sanitizer.
3. **Cohorts** — conducting all activities in small groups that remain together over time with minimal mixing of groups.
4. **Protective equipment** — use of face shields, face coverings, and barriers.
5. **Environmental cleaning and disinfection** — especially of high-touch surfaces.
6. **Isolation** of sick people and quarantine of exposed people.
7. With the above considerations foremost, outdoor activities are safer than indoor activities.

# INSTRUCTIONAL MODELS

2020-21 SCHOOL YEAR

## ON-SITE



### Students Safely Learn In School

All students have access to in-person instruction in accordance with public health requirements.

## HYBRID



### Students Safely Learn In School and Away from School

**Student groups** have access to in-person instruction using staggered schedules and/or prioritizing certain grades, courses, and/or programs, in accordance with public health requirements. On-Site instruction is supplemented by Comprehensive Distance Learning.

## COMPREHENSIVE DISTANCE LEARNING



### Students Safely Learn Away from School

All students are engaged in learning through Comprehensive Distance Learning. Instruction occurs remotely with very limited exceptions for in-person supports.

Long term  
**Comprehensive Distance Learning (CDL)** is different than Distance Learning for All (*what we did in spring 2020*)

In case of closure, schools will shift to  
**Short-Term Distance Learning**



## RESPONSE TO OUTBREAK

Districts, schools, and programs need to flexibly plan to use multiple models throughout the school year to meet evolving health conditions. Even when the primary plan is through an On-Site or Hybrid learning model, Short-Term Distance Learning may be required due to outbreaks.

# Guidance Highlights

## Public Health

- ❑ Update/develop plan communicable disease plan, in coordination with LPHA
- ❑ Disinfecting plan
- ❑ Screening students/staff, isolating ill/exposed
- ❑ Maintain daily logs for each student/cohort
- ❑ Protocol to respond to outbreaks
  - ❑ Coordinated with LPHA
  - ❑ If school closed, shift to Short Term Distance Learning
  - ❑ Protocol for re-opening after

# Guidance Highlights

## Distancing

- ❑ 35 square feet per person (room capacity)
- ❑ Maintain 6 feet distance
- ❑ Minimize standing in lines. Establish traffic flow
- ❑ Schedule modifications to limit number of students
- ❑ Stable cohorts
- ❑ System for daily logs
- ❑ Minimize interactions between students in different cohorts (i.e. common areas, transitions)
- ❑ Reduce mixing of cohorts



# Guidance Highlights

## Cleaning

- ❑ Staff wash/sanitize between cohorts
- ❑ Clean, sanitize, disinfect frequently touched surfaces and shared objects between uses multiple times per day
  - ❑ Cleaning between student uses, even in same cohort
- ❑ Increase circulation of outdoor air as much as possible
  - ❑ do not use fans if pose health risk, i.e. exacerbating asthma or recirculating air in closed room
- ❑ Facilities cleaned and disinfected at least daily

# Guidance Highlights

## Entry and Screening

- ❑ Stay home if have symptoms
- ❑ Screen all students/staff on entry to bus/school every day (visually and/or parent confirmation)
- ❑ Coordinate with LPHA on restrictions
- ❑ Protocols for personal property brought to school
- ❑ Hand hygiene on entry to school every day
  - ❑ wash soap/water for 20 seconds, OR alcohol based sanitizer with 60-95% alcohol
- ❑ Physical distancing, stable cohorts, square footage, cleaning requirements maintained during arrival/dismissal
- ❑ Assign cohorts to entrances, assign staff to screen
- ❑ Specific sign in/out protocol
- ❑ Procedures for caregiver drop-off/pick-up

# Guidance Highlights

## Face Coverings/ Face Shields/ Clear Plastic Barriers

### Required for:

- Face coverings or shields for:
  - Staff regularly within 6 ft of students/staff
  - Bus drivers
  - Staff preparing and/or serving meals
- Face shields, coverings or barriers for:
  - Speech pathologist
  - Front office staff
- Face masks for: providing direct contact care and monitoring of symptoms

### Recommended for:

- Face coverings or shields for:
  - All staff
  - Staff who interact with public
  - Staff who interact with multiple cohorts
  - Students in 6th-12th grades

# Guidance Highlights

## Classroom Spaces

- ❑ Seating - 6 ft apart, assigned to same seat at all times
- ❑ Materials - avoid sharing community supplies. Clean items frequently
- ❑ Regular handwashing
- ❑ Limit transitions
- ❑ Refrain from mixing classes

# Guidance Highlights

## Playgrounds

- ❑ Playgrounds closed to public
- ❑ Handwashing before and after playground
- ❑ Designate playground equipment per cohort. Disinfect between sessions
- ❑ Physical distancing, stable cohorts, square footage maintained
- ❑ Signage and restrict access to outdoor equipment
- ❑ Design recess activities that allow for distancing
- ❑ Clean all outdoor equipment between cohorts

# Guidance Highlights

## Meal Services

- ❑ Staff serving must wear face shields or covering
- ❑ Students must wash before meals and encouraged to do so after
- ❑ Daily cleaning of meal items in classrooms where meals consumed
- ❑ Cleaning and sanitizing of meal touch-points between cohorts
- ❑ Cleaning of tables between meal periods

# Guidance Highlights

## Transportation

- ❑ Buses cleaned frequently (between routes, focus on frequently touched surfaces)
- ❑ Protocol for loading/unloading that includes visual screening and logs
- ❑ Driver wears face shields or face coverings
- ❑ Inform parents of changes to services (physical distancing at stops, loading protocol, etc)
- ❑ Recommended 3 feet of distance between passengers
- ❑ Possible route adjustments (to accommodate schedules, capacity, cohorts, etc.)

# Guidance Highlights

## Instruction

- ❑ Instructional Time
- ❑ Instructional Models
  - ❑ Each models requires specifics regarding meals, access, high-risk students, etc.
  - ❑ Each model has specific attendance requirements
  - ❑ Adjustments between plans
- ❑ Schedule and Academic Calendar adjustments
- ❑ Activities with a Higher Risk for Disease Spread
  - ❑ Labs, CTE, Performing Arts, PE
  - ❑ Carefully consider sections 1 & 2
  - ❑ Instrument cleaning guidelines



# Guidance Highlights

## Visitors

- ❑ Restrict non-essential visitors
- ❑ Visitors must:
  - ❑ Wash/sanitize on entry
  - ❑ Wear face coverings
  - ❑ Entry screened, logged
  - ❑ 6 ft distancing

# Upcoming Dates

- 7/21 - ODE updated guidance
- 8/4 @ 6pm - Community Meeting (tentative)
- 8/11 - ODE updated guidance
- TBD - Additional guidance updates (athletics, special education)
- 8/15 - Operational Blueprint completed

# Questions / Input

